

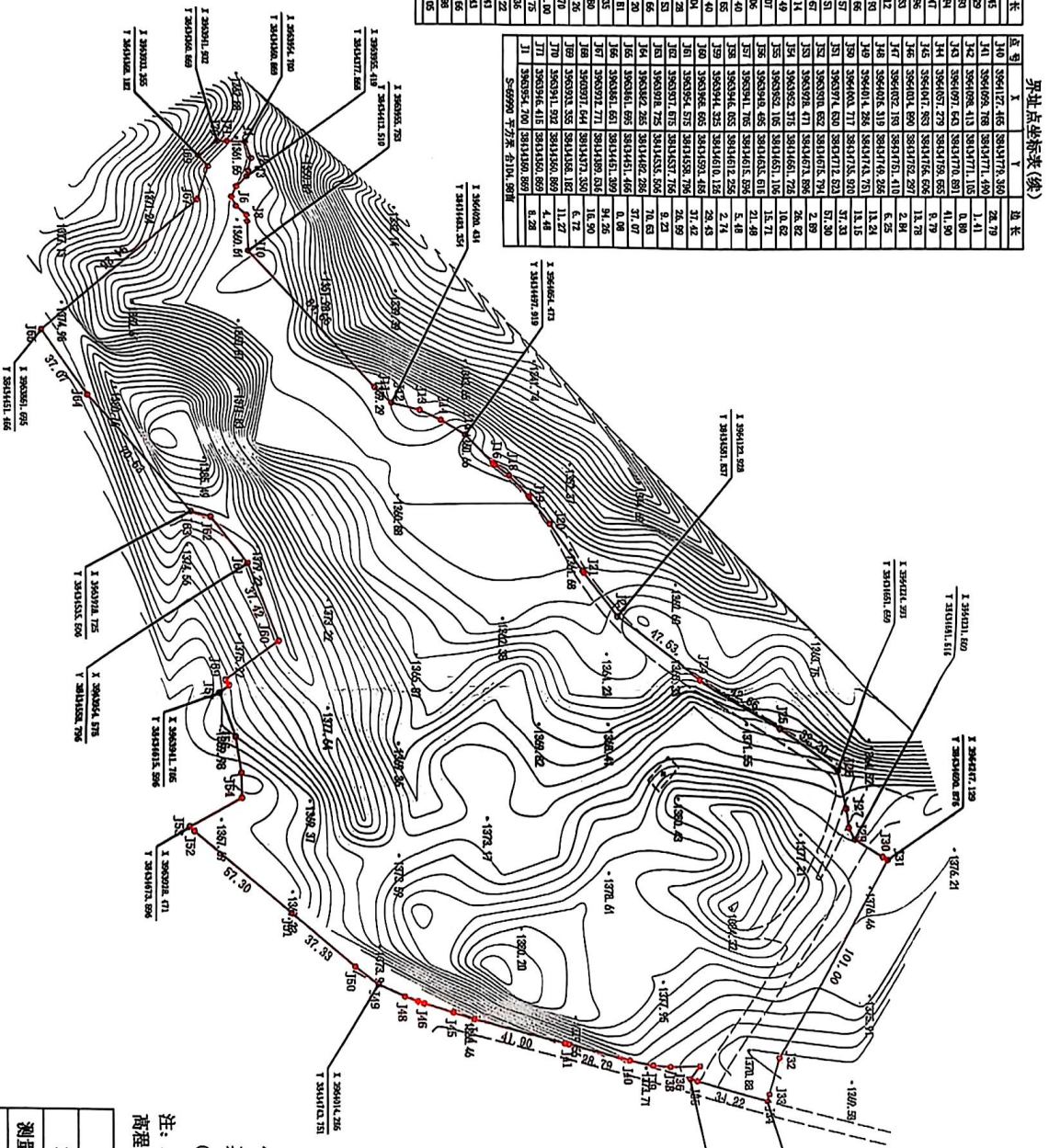
# 陵川县自然资源局2024-08号出让地块用地红线图

界址点坐标表(续)

点号	X	Y	边长
J1	396041.700	3934350.692	8.45
J2	396041.429	3934352.650	6.29
J3	396041.064	3934351.800	2.90
J4	396035.919	3934351.880	6.84
J5	396035.970	3934352.020	5.47
J6	396035.916	3934351.614	4.86
J7	396035.196	3934352.488	3.12
J8	396035.196	3934352.488	3.12
J9	396035.196	3934352.488	3.12
J10	396035.196	3934352.488	3.12
J11	396041.029	3934351.720	10.57
J12	396041.434	3934351.554	13.51
J13	396041.029	3934351.720	10.57
J14	396041.434	3934351.554	13.51
J15	396041.029	3934351.720	10.57
J16	396041.434	3934351.554	13.51
J17	396041.029	3934351.720	10.57
J18	396041.434	3934351.554	13.51
J19	396041.029	3934351.720	10.57
J20	396041.434	3934351.554	13.51
J21	396041.029	3934351.720	10.57
J22	396041.434	3934351.554	13.51
J23	396041.029	3934351.720	10.57
J24	396041.434	3934351.554	13.51
J25	396041.029	3934351.720	10.57
J26	396041.434	3934351.554	13.51
J27	396041.029	3934351.720	10.57
J28	396041.434	3934351.554	13.51
J29	396041.029	3934351.720	10.57
J30	396041.434	3934351.554	13.51
J31	396041.029	3934351.720	10.57
J32	396041.434	3934351.554	13.51
J33	396041.029	3934351.720	10.57
J34	396041.434	3934351.554	13.51
J35	396041.029	3934351.720	10.57
J36	396041.434	3934351.554	13.51
J37	396041.029	3934351.720	10.57
J38	396041.434	3934351.554	13.51
J39	396041.029	3934351.720	10.57
J40	396041.434	3934351.554	13.51

界址点坐标表(续)

点号	X	Y	边长
J41	396041.029	3934351.720	28.79
J42	396041.434	3934351.554	1.41
J43	396041.029	3934351.720	0.80
J44	396041.434	3934351.554	41.90
J45	396041.029	3934351.720	8.79
J46	396041.434	3934351.554	13.78
J47	396041.029	3934351.720	6.25
J48	396041.434	3934351.554	13.24
J49	396041.029	3934351.720	13.51
J50	396041.434	3934351.554	57.30
J51	396041.029	3934351.720	57.30
J52	396041.434	3934351.554	2.80
J53	396041.029	3934351.720	26.82
J54	396041.434	3934351.554	11.62
J55	396041.029	3934351.720	15.71
J56	396041.434	3934351.554	21.49
J57	396041.029	3934351.720	6.40
J58	396041.434	3934351.554	2.74
J59	396041.029	3934351.720	28.79
J60	396041.434	3934351.554	28.79
J61	396041.029	3934351.720	28.79
J62	396041.434	3934351.554	28.79
J63	396041.029	3934351.720	28.79
J64	396041.434	3934351.554	28.79
J65	396041.029	3934351.720	28.79
J66	396041.434	3934351.554	28.79
J67	396041.029	3934351.720	28.79
J68	396041.434	3934351.554	28.79
J69	396041.029	3934351.720	28.79
J70	396041.434	3934351.554	28.79
J71	396041.029	3934351.720	28.79
J72	396041.434	3934351.554	28.79
J73	396041.029	3934351.720	28.79
J74	396041.434	3934351.554	28.79
J75	396041.029	3934351.720	28.79
J76	396041.434	3934351.554	28.79
J77	396041.029	3934351.720	28.79
J78	396041.434	3934351.554	28.79
J79	396041.029	3934351.720	28.79
J80	396041.434	3934351.554	28.79
J81	396041.029	3934351.720	28.79
J82	396041.434	3934351.554	28.79
J83	396041.029	3934351.720	28.79
J84	396041.434	3934351.554	28.79
J85	396041.029	3934351.720	28.79
J86	396041.434	3934351.554	28.79
J87	396041.029	3934351.720	28.79
J88	396041.434	3934351.554	28.79
J89	396041.029	3934351.720	28.79
J90	396041.434	3934351.554	28.79
J91	396041.029	3934351.720	28.79
J92	396041.434	3934351.554	28.79
J93	396041.029	3934351.720	28.79
J94	396041.434	3934351.554	28.79
J95	396041.029	3934351.720	28.79
J96	396041.434	3934351.554	28.79
J97	396041.029	3934351.720	28.79
J98	396041.434	3934351.554	28.79
J99	396041.029	3934351.720	28.79
J100	396041.434	3934351.554	28.79



总用地面积为69990平方米  
其中：  
①净用地面积为69990平方米

注：本图平面坐标采用2000国家大地坐标系，中央子午线为114°，高程系统采用1985国家高程基准

项目名称		陵川县自然资源局2024-08号出让地块	
测量	王浩	检查	原阳
绘图	段锐	审核	原阳
图号	2024-LH01	比例尺	1:2000
日期	2024年3月		